

# Case study

## Forest Thematic trail Podsreda Castle Trail

Slovenia

A case of a thematic trail

<https://kozjanski-park.si/>

### Podsreda Castle Trail - thematic trail

The Podsreda Castle Trail is located in the heart of the Kozjanski Park and is part of the Podsreda Walking Trail.

It runs from the medieval Podsreda Square, past the Levstik Mill on the Bistrica River and then through the forest to Podsreda Castle.

The trail is marked with directional and information signs, which will help you to explore the exceptional biodiversity and rich cultural heritage

### Location

Kozjanski Park is a 206 km<sup>2</sup> protected area with the status of a regional park.

The protected area is bounded by the Rudnica hills to the north, the Sotla River to the east, the Orlica hills to the south, the Bizeljsko and Senovsko Hills to the south, and the Vetrnik and Oslica Hills to the west.

It is characterised by a passage from the foothill hills and predominantly forested areas to the Sotla plain. Between the flat Obsotelje and the hills of the eastern Posavje hills are the fruit-growing and wine-growing Srednjesotelsko and Bizeljsko-Sremisko tertiary hills.

The main watercourses are the Bistrica and Sotla rivers, whose valleys form the flat part of the area where the main transport links run and where all the major central settlements are located.





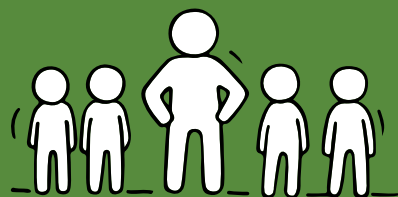
Over 50% of the area is covered by forests, mainly various associations of beech forests, which are being replaced by oak and other thermophilous associations in the southern slopes. Among the forest woody species of nature conservation importance are the prickly pear (*Ilex aquifolium*) and yew (*Taxus baccata*), the mild and scented wolfberry (*Daphne blagayana*, *D. cneorum*), and the broad-leaved and prickly-leaved lobed dogwood (*Ruscus hypoglossum*, *R. aculeatus*).



The nature of the Kozjanski Park is characterised by an exceptionally high level of biodiversity, which is also confirmed by the fact that 69% of the Kozjanski Regional Park is included in Natura 2000 sites. Censuses and monitoring surveys are increasing the lists of flora and fauna species from year to year. We can be particularly proud of the numerous data on cuckoos, butterflies, locusts, beetles.



## Linking economies and stakeholders for commercial partnership



### Activities & Commercial Model



### Wellbeing



### Sustainability and Trees



This resource is licensed under CC BY 4.0



Slovenia has 5,000 kilometres of themed and walking trails, criss-crossed by trails.

Carefully planned and managed trails reveal the special features and highlights of the natural or cultural environment in which we walk. They are easy and informative trails, and most of them can be walked in all seasons. They are common in Slovenian nature parks, each of which inspires with its own rich flora and fauna. Others lead along trails of cultural heritage, cuisine or other local specialties. Translated with DeepL.com (free version)

Every year, the Slovenian Tourist Board, the Slovenian Forest Institute and the Slovenia Outdoor portal prepare a selection of the best thematic trails.

<https://www.slovenia.info/sl/zgodbe/top-slovenske-tematske-poti>



ZAVOD za GOZDOVE  
SLOVENIJE  
Slovenia Forest Service

Disclaimer This project has been funded with support from the European Commission. The author is solely responsible for this publication (communication) and the Commission accepts no responsibility for any use may be made of the information contained therein. In compliance of the new GDPR framework, please note that the Partnership will only process your personal data in the sole interest and purpose of the project and without any prejudice to your rights 2022-1-SI01-KA220-VET-000086492